

# ASSEMBLY INSTRUCTIONS

ITEM DESCRIPTION:

ITEM NO.: DWS04 NAME: OVERSIZED NATURAL SCONCE

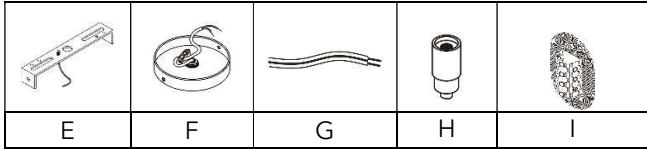
MATERIAL TYPE: Cane Rib, Lampacanai, Metal

FINISH: Brass, Natural

SOCKET TYPE: E12 SOCKET QTY: 2

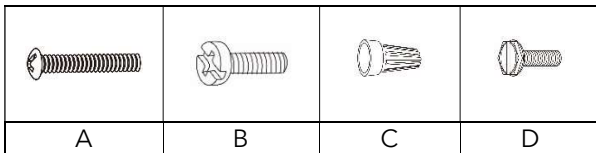
BULB WATTAGE: 40W VOLTAGE: 110-120V

ITEM NET WEIGHT: 1.60 Kgs



PARTS INCLUDED:

MOUNTING PLATE	(E)	QTY: 1
CANOPY	(F)	QTY: 1
FIXTURE WIRE	(G)	QTY: 1
SOCKET	(H)	QTY: 2
SHADE	(I)	QTY: 1



HARDWARE INCLUDED:

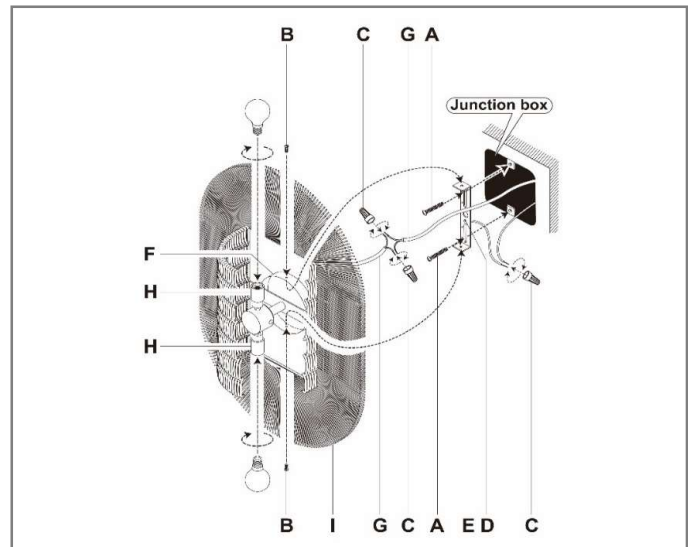
Mounting Screws	(A)	QTY: 2
Canopy Screw	(B)	QTY: 2
Plastic Wire connectors	(C)	QTY: 3
Green Ground Screw	(D)	QTY: 1

TOOLS NEEDED (NOT INCLUDED):

1 SCREWDRIVER

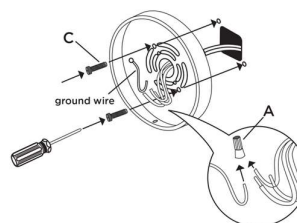
These instructions are provided for safety. It is very important that they are read carefully and completely before beginning installation of this chandelier.

**We strongly suggest that all hard-wired fixtures must be installed by a professional electrician.**



TO ASSEMBLE:

1. **Shut off the main electrical supply from the main fuse box/circuit breaker.**
  2. Attach mounting plate to wall or junction box using **mounting screws (C)**.
  3. Connect ground wire from wall to ground wire from lamp using **wire caps (A)**.
  4. Attach house wire to lamp wires as shown. Fasten the pairs together with a **wire cap**.
- DO NOT REVERSE THE HOT AND NEUTRAL CONNECTIONS OR SAFETY WILL BE COMPROMISED.**
5. Attach front face of light to back plate by inserting **canopy screws (B)** through predrilled holes in front face and into back plate as shown. Tighten using screwdriver.
  6. Insert light bulb.
  7. Restore power to junction box and test fixture. **DO NOT EXCEED SPECIFIED MAX WATTAGE** Restore power to junction box and test fixture. **DO NOT EXCEED SPECIFIED MAX WATTAGE.**



CARE INSTRUCTIONS:

Wipe with a soft, dry cloth. To protect finish, avoid the use of chemicals and household cleaners.

For customer service questions call **1-800-338-2150**  
 Arteriors Home: **972.488.9800** Arteriors Contract:  
**972.488.9800 Ext.321**

ARTERIOS