

# ASSEMBLY INSTRUCTIONS

## ITEM DESCRIPTION:

ITEM NO.: 45200	NAME: Midori Pendant
MATERIAL TYPE: Rattan	FINISH: Natural
SOCKET TYPE: E26	SOCKET QTY: 1
BULB WATTAGE: 60W/CFL 16W/LED 13W	
VOLTAGE: 110-120 V	ITEM NET WEIGHT: 20LBS



## PARTS INCLUDED:

A MOUNTING SCREWS	Qty: 2
B CANOPY SCREWS	Qty: 2
CANOPY	Qty: 1
RODS	Qty: 3
SOCKET	Qty: 1
SHADE	Qty: 1

## HARDWARE INCLUDED:

Green Ground Screw	1 Pc	Allen Wrench	1 Pc
--------------------	------	--------------	------

## TO INSTALL YOU WILL NEED:

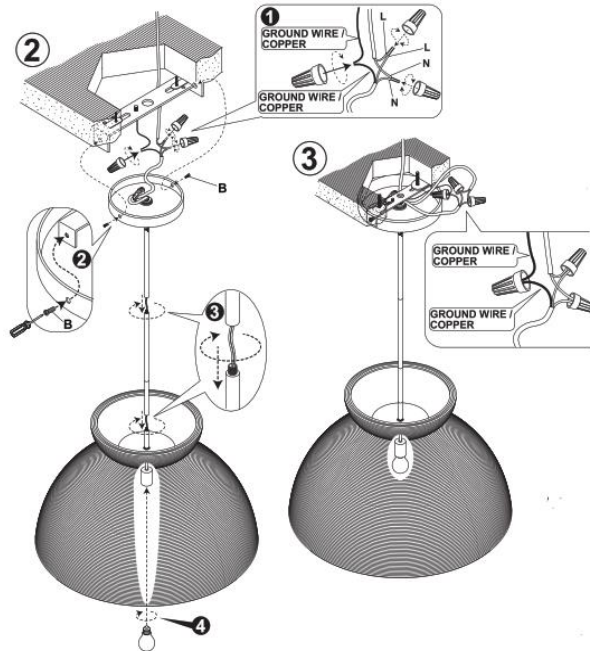
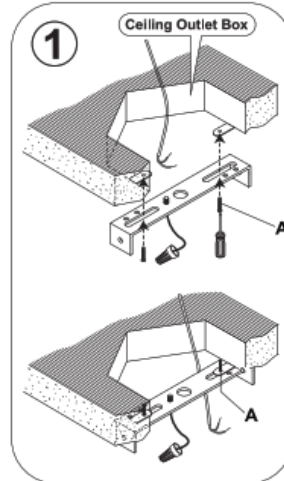
- 2 people recommended
- Phillips Screwdriver

These instructions are provided for safety. It is very important that they are read carefully and completely before beginning installation of this chandelier.

We strongly suggest that all hard-wired fixtures must be installed by a professional electrician.

## TO ASSEMBLE:

1. Shut off the main electrical supply from the main fuse box/circuit breaker.
2. Carefully unpack all fixture parts and hardware and lay them on a soft surface for assembly.
3. Follow steps shown in figures 1-3.
4. Restore power to junction box and test fixture. Insert 60W bulb into fixture. DO NOT EXCEED SPECIFIED WATTAGE OF PENDANT.



## CARE INSTRUCTIONS:

Wipe with a soft, dry cloth. To protect finish, avoid the use of chemicals and household cleaners.

For customer service questions call 1-800-338-2150

ARTERIOORS