

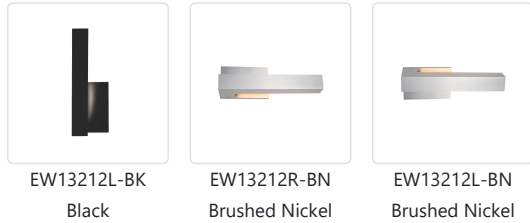
# WARNER EW13212

WALL

PROJECT

## DESCRIPTION

Bold and sophisticated the Warner wall sconce is a versatile example of reductive geometric design. The monolithic machined lamp head showcases the refined finish treatment on the substantial planar surfaces. The rectangular backplate is partially illuminated by the light source and serves to augment the material as focal point. Available in two asymmetric designs and multiple mounting orientations the fixture is conditionally adaptive.



EW13212L-BK  
Black

EW13212R-BN  
Brushed Nickel

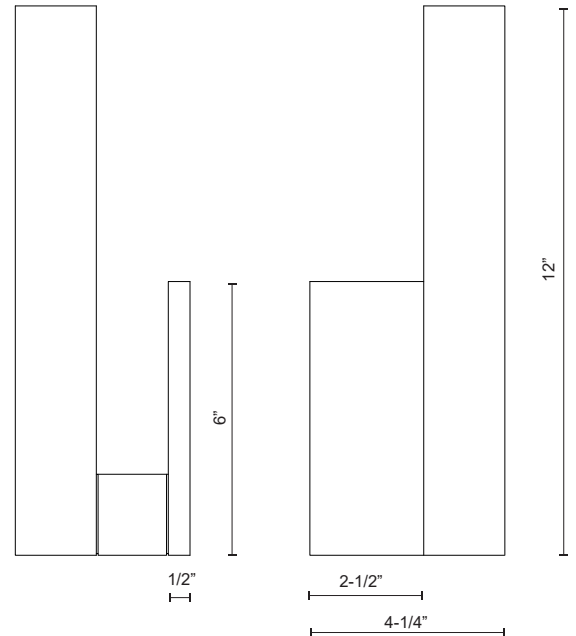
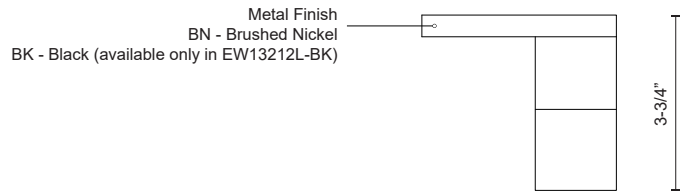
EW13212L-BN  
Brushed Nickel

## SPECIFICATION DETAILS

<b>Fixture Dimensions</b>	W4-1/4" x H12" x E3-3/4"
<b>Light Source</b>	AC LED Module
<b>Wattage</b>	17W
<b>Total Lumens</b>	1200lm
<b>Delivered Lumens</b>	BN-451lm
<b>Voltage</b>	120V
<b>Color Temperature</b>	3000K
<b>CRI (Ra)</b>	90CRI
<b>Optional Color Temps</b>	2700K - 5000K Available, Minimum Order Quantities Apply
<b>LED Rated Life</b>	50,000 hours
<b>Dimming</b>	100% - 10%, ELV Dimmer (Not Included)
<b>Glass Details</b>	Frosted Glass
<b>ADA Compliant</b>	Yes
<b>Location</b>	Wet
<b>Illumination Direction</b>	Backlit
<b>Mounting Style</b>	All Orientation; Wall;
<b>Canopy Dimensions</b>	W4-1/2" x H6" x E1/2"
<b>Paint Finish</b>	BN02

\* For custom options, consult factory for details.

\* For warranty information, please visit [www.kuzcolighting.com/warranty](http://www.kuzcolighting.com/warranty)



# KUZCO

CANADA: 19054 28TH AVENUE - SURREY, BC V3Z 6M3

USA: 3035 E. LONE MOUNTAIN ROAD - LAS VEGAS, NV 89081

[WWW.KUZCOLIGHTING.COM](http://WWW.KUZCOLIGHTING.COM)

© 2018 KUZCO LIGHTING. ALL RIGHTS RESERVED.

## COMMENT

