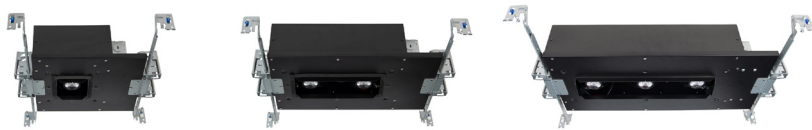


OCULARC 2" MULTIPLE SPOTS

New Construction Housing - MT-21, MT-22, MT-23

WAC LIGHTING

Responsible Lighting®



Fixture Type:

Catalog Number:

Project:

Location:

SPECIFICATIONS

Construction: Die-cast light engine. 20 gauge cold rolled steel housing.

Input: 120V - 277V AC 50/60 Hz.

Dimming: 100% - 5% TRIAC, ELV (120V)
100% - 5%, 0-10V (120-277V)

Light Source: High output 3-step Mac Adam Ellipse COB
Rated life of 50,000 hrs

Mounting: Accommodates 1/2"-1" ceiling thickness.

Operating temp: -4°F to 104°F (-20°C to 40°C)

Standards: UL & cUL, Airtight, Title 24 JA8-2019 Compliant.

Housings (Order Trim Separately)	Model	Power	Beam	Color Temp	CRI
	MT-2109 New construction IC Rated, Airtight	8.5W			
	MT-2115 New construction Non-IC, Airtight	15W			
	MT-2209 New construction IC Rated, Airtight	17W			
	MT-2215 New construction Non-IC, Airtight	30W	S 16° N 30° F 50°	927 2700K 930 3000K 935 3500K 940 4000K	90 90 90 90
	MT-2309 New construction IC Rated, Airtight	25.5W			
	MT-2315 New construction Non-IC, Airtight	45W			

waclighting.com
 Phone (800) 526.2588
 Fax (800) 526.2585

Headquarters/Eastern Distribution Center
 44 Harbor Park Drive
 Port Washington, NY 11050

Central Distribution Center
 1600 Distribution Ct
 Lithia Springs, GA 30122

Western Distribution Center
 1750 Archibald Avenue
 Ontario, CA 91760

OCULARC 2" MULTIPLE SPOTS

New Construction Housing - MT-21, MT-22, MT-23

WAC LIGHTING

Responsible Lighting®

ACCESSORIES Each light engine accomodates accessory optical film and one lens or honeycomb louver

ACCESSORY HOLDER sold separately

LENS-11-HLD	Required for use with any lens or accessory
--------------------	---

GLARE CONTROL ACCESSORIES sold separately

LENS-11-HCL	Honeycomb Louver
--------------------	------------------

LENS ACCESSORIES sold separately

LENS-11	AMB	Amber
	RED	Red
	FR	Frosted
	SPR	Spread
	BEL	Beam Elongating

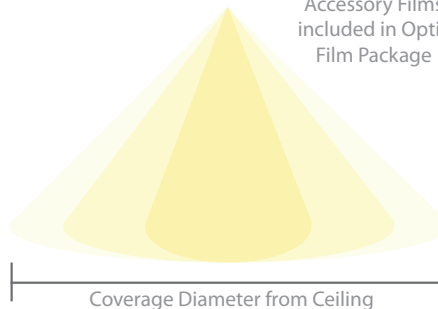
ACCESSORY OPTIC FILMS sold separately

MT-2-FILM		
Optic Film Package: includes 3 films (A, B, C)		
LENS-11-HLD Required (sold separately)		

Primary Optic	Accessory Film	Resulting Beam
S (16°)	A	25°
S (16°)	B	45°
S (16°)	C	55°
N (30°)	A	35°
N (30°)	B	55°
N (30°)	C	65°
F (50°)	A	52°
F (50°)	B	70°
F (50°)	C	80°



Accessory Films included in Optic Film Package



COVERAGE DIAMETER FROM 8' CEILING IN FEET

Primary Optic	No Film	+ Film A	+ Film B	+ Film C
Spot	2'	3.5'	6.5'	8.5'
Narrow	4.5'	5'	8.5'	10'
Flood	7.5'	8'	11'	13.5'

COVERAGE DIAMETER FROM 10' CEILING IN FEET

Primary Optic	No Film	+ Film A	+ Film B	+ Film C
Spot	3'	4.5'	8.5'	10.5'
Narrow	5.5'	6.5'	10.5'	12.5'
Flood	9.5'	10'	14'	17'

Above charts represent beam distribution only. Footcandle values should be considered in addition to meet project requirements.

REPLACEMENT HEADS (INCLUDES: ONE HEAD & LED)

Model	Beam	Color Temp
4MT2-S927-BK	Spot	2700K
4MT2-S930-BK		3000K
4MT2-S935-BK		3500K
4MT2-S940-BK		4000K
4MT2-N927-BK	Narrow Flood	2700K
4MT2-N930-BK		3000K
4MT2-N935-BK		3500K
4MT2-N940-BK		4000K
4MT2-F927-BK	Flood	2700K
4MT2-F930-BK		3000K
4MT2-F935-BK		3500K
4MT2-F940-BK		4000K

REPLACEMENT DRIVERS (ONE DRIVER PER LIGHT ENGINE)

Model	Power	Rating
D-MT2-9	8.5W	IC
D-MT2-15	15W	Non-IC

wacighting.com

Phone (800) 526.2588
Fax (800) 526.2585

Headquarters/Eastern Distribution Center

44 Harbor Park Drive
Port Washington, NY 11050

Central Distribution Center

1600 Distribution Ct
Lithia Springs, GA 30122

Western Distribution Center

1750 Archibald Avenue
Ontario, CA 91760