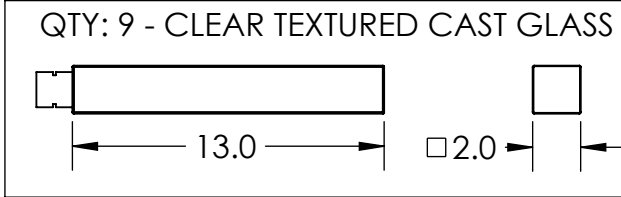
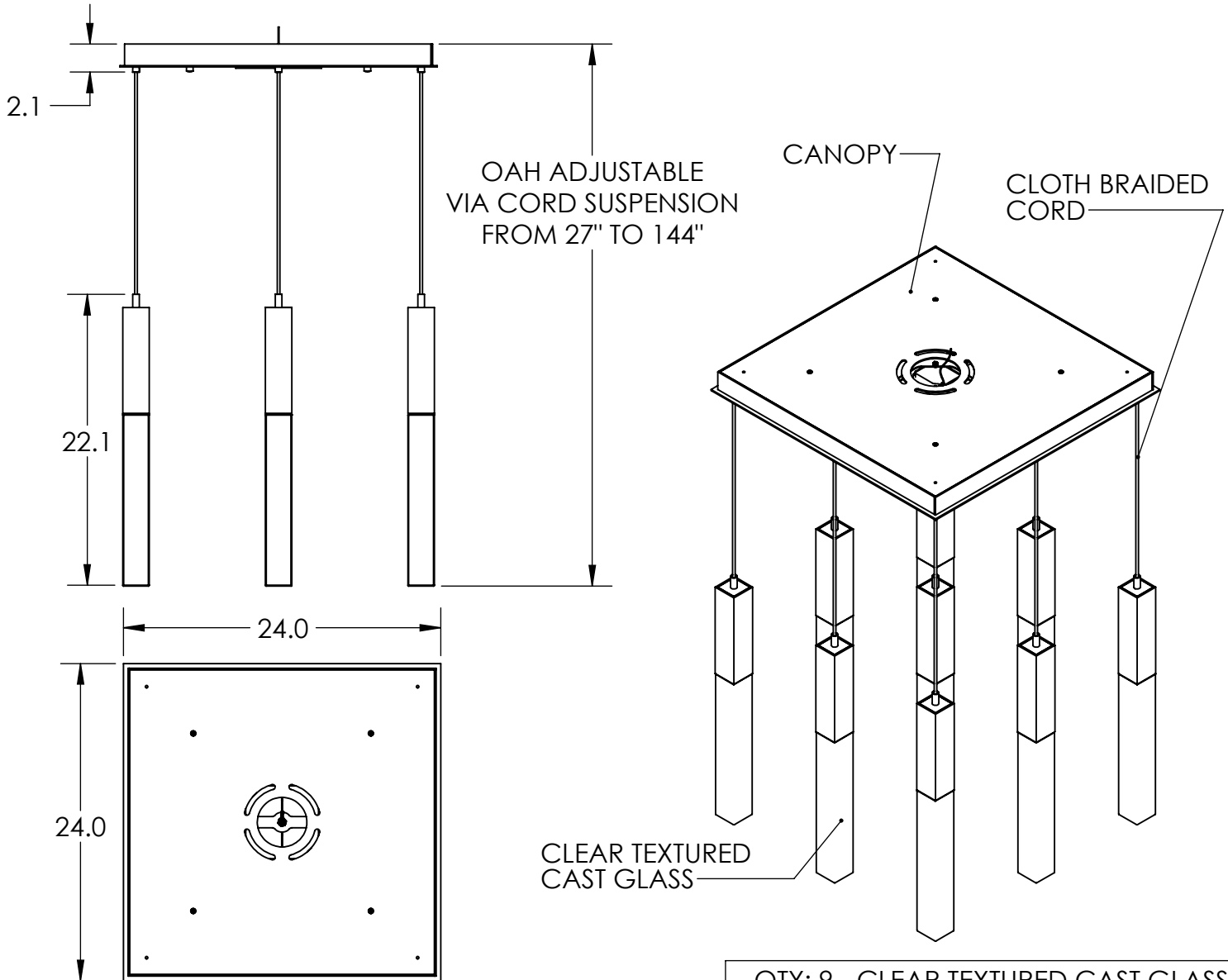


Collection: AXIS

Product #: CHB0060-09

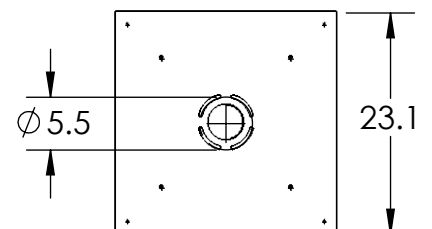


Visit hammertonstudio.com for product options and specifications.

8/5/2021 (B)

Mounting Packet: R	Weight(lbs.): 96	Electrical Type: LED	CCT: 2700/3000 K
UL Location: DRY	Elec. Qty: 9	Wattage: 35	Voltage: 120
Finish: SEE WEB SITE FOR OPTIONS	Source Lumens:	Ambient: 3782	Down: 0
Top Diffuser: N/A	Dimmable: Forward/Reverse Phase To 1%		
Bottom Diffuser: CAST GLASS	CRI: 93+	Power Factor: >0.9	

Mounting Detail



All fixtures created by Hammerton are handcrafted by artisans. Dimensions may vary up to 7/8".

© Copyright 2021. All rights in design, detail or invention of this drawing are reserved as the property of Hammerton. Any imitation or adaptation without written consent is strictly prohibited.