

Doodle, freehand design.

design Simone Micheli
terzani.com







Product Name
Doodle
linear chandelier

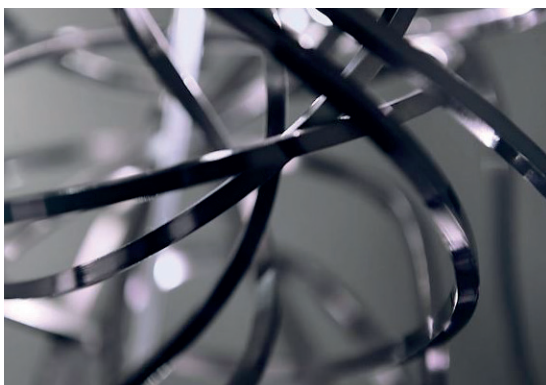
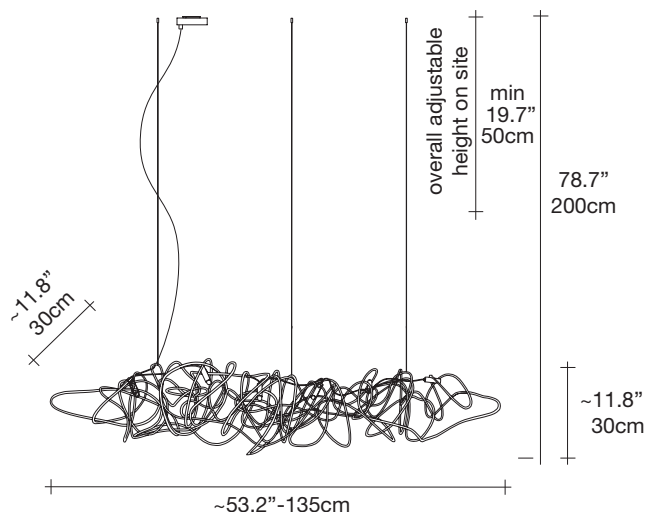
Materials
brass



Finishes | Code

-  nickel
OJ81S E7 C8
-  black amethyst
OJ81S M4 C8
-  gold plated
OJ81S L6 C8
-  copper (may age naturally)
OJ81S L5 C8

Body



Light source

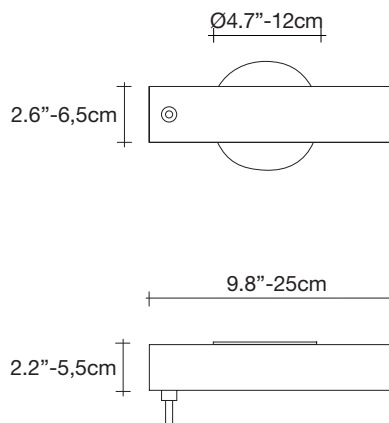
120V ~ 50/60Hz

 LED
6 X 2W G4 12V

dimnable with

 IGBT
TRIAC

Canopy



We no longer march in a straight line. Our lives are dynamic, intertwining collections of relationships, experiences and journeys. Reflecting the fluidity of our generation, designer Simone Micheli has created a new, contemporary light for Terzani Doodle. Like us, each Doodle is unique each pendant is handcrafted by artisans to resemble a randomised path. And, to give us control over the journey we want to take, each LED bulb can be placed anywhere on the light, not only reflecting the choices we make in life, but giving Doodle a special flexibility. Design Simone Micheli.