

# NPR-4RPHA

## 4" Pearl LED Round Adjustable Pinhole Retrofit

Source: 12W LED  
750lm

Type

Project

Catalog No.

Notes

### PRODUCT DESCRIPTION

Pearl LED Retrofit series is cULus classified for use in existing IC housings manufactured by Nora. The 4" retrofit luminaires deliver up to 550 lumens with 2" pinhole to focus the beam spread through small opening. Available in fixed downlight or adjustable.

### FEATURES

- Comfort Dim (warm dimming) is available in 550lm only
- 2700K, 3000K, 3500K, 4000K @ 90+ CRI
- Field changeable optics included (Spot, Narrow Flood and Flood - installed)
- Integral dimmable driver
- 5-year limited warranty
- ENERGY STAR certified
- cULus classified for damp locations

### SPECIFICATION

**Construction:** Trims are constructed of heat dissipating, die-cast aluminum. The aluminum die-cast LED heat sink is threaded to fit the trim and transfer heat.

**Mounting:** Trim includes friction blades to mount securely to housing.

### OPTICS

Three field changeable optics (spot, narrow flood and flood) are included with each LED module. Premium 22° and 26° TIR optics are also available.

### ELECTRICAL

**Input Voltage:** 120V

**Lumens / Wattage:** 750lm / 12W (550lm w/ Comfort Dim)

**Color Temperature:** 2700K, 3000K, 3500K, 4000K

**Color Rendering Index:** 90+CRI

**Beam Spread:** 27° Spot, 35° Narrow Flood, 45° Flood

**Operating Temperature:** 0°C to 25°C

**Lifetime:** 50,000 hours @ L70

**Comfort Dim:** Comfort Dim color tunes the temperature from a bright 3100K, to a romantic and comfortable 2000K on a gradual, even curve. Available in 550lm only.

**Dimming:** Triac (leading edge) or ELV (trailing edge)

[Click Here](#) or check complete dimmer list at [www.NoraLighting.com](http://www.NoraLighting.com) in the "Compatibility" page under "Resources" tab

### COMPATIBLE HOUSING

Pearl adjustable pinhole retrofit reflectors are compatible with 4" Max. Adjustability IC housing by Nora only.

#### New Construction

[NSIC-4LMRAT](#) Max. Adjustability ICAT Dedicated LED

**Accessories:** Luminaires can accommodate (1) hex louver and (1) translucent deco collar or opaque snoot, no accessory holder is required, see accessories page.

### LABELS AND LISTINGS

- cULus classified for Damp Locations
- ENERGY STAR certified
- RoHS compliant
- [5-Year Limited Warranty](#)
- Certified to the high efficacy requirements of California Title 24 JA8-2022

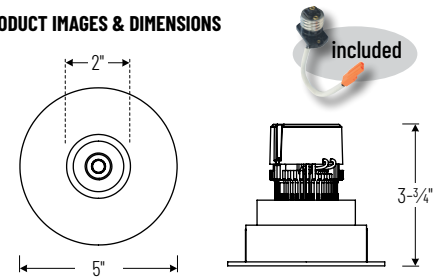


### Performance Data

Part Number	Lumens	CCT	Optic
<b>NPR-4RPHA30XWW</b>	747lm	3000K	Spot
<b>NPR-4RPHA30XWW</b>	730lm	3000K	Narrow
<b>NPR-4RPHA30XWW</b>	690lm	3000K	Flood

*Delivered lumens will vary depending on CCT, optic and finish*

### PRODUCT IMAGES & DIMENSIONS

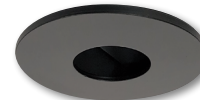


#### NPR-4RPHA

Round Adjustable Pinhole

20° Adjustable (varies by housing)

\* For maximum adjustment use [NSIC-4LMRAT](#) \*



#### BB

Black Pinhole  
Black Flange



#### BMPW

Black Pinhole  
Matte Powder White Flange



#### HZMPW

Haze Pinhole  
Matte Powder White Flange



#### MPW

Matte Powder White Pinhole  
Matte Powder White Flange



#### WW

White Pinhole  
White Flange

## 4" Pearl LED Round Adjustable Pinhole Retrofit

Trim Type	Color Temperature	Finish
<b>NPR-4RPHA</b> = Round Adjustable Pinhole	<b>27X</b> = 2700K	<b>BB</b> = Black / Black
	<b>30X</b> = 3000K	<b>BMPW</b> = Black / Matte Powder White
	<b>35X</b> = 3500K	<b>HZMPW</b> = Haze / Matte Powder White
	<b>40X</b> = 4000K	<b>MPW</b> = Matte Powder White
	<b>CDX</b> = Comfort Dim	<b>WW</b> = White

Example: **NPR-4RPHA27XWW** = 4" Pearl LED Round Adjustable Pinhole Retrofit, 2700K, White finish

Pearl LED Retrofit Accessories

4" Pearl LED Round Adjustable Pinhole Retrofit

Type

Project

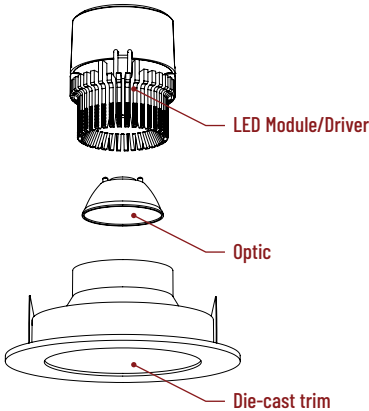
Catalog No.

Notes

FIELD CHANGEABLE OPTICS

Pearl luminaires include spot, narrow flood and flood optics. Optics can be changed in the field by removing LED module from die-cast trim. Replacement optics include an optional frosted lens.

Note: Premium TIR optics are not compatible with Comfort Dim LED modules.



Frosted Filter-Optic

NIO-REFL38FR 60° Optic  
NIO-REFL60FR 73° Optic

Replaces optics that are included with each LED module.



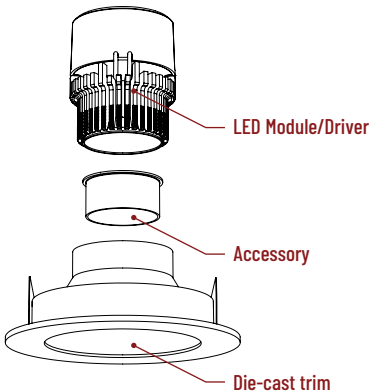
Premium TIR Optics

NIO-REFLTIR15 22° Optic  
NIO-REFLTIR25 26° Optic

Premium TIR (total internal reflection) optics create optimal spot and narrow flood beam spread.  
**Not compatible with Comfort Dim (CDX) LED module**

ACCESSORIES

Pearl accessories can be added at any point in the design process. Accessories easily install between LED module and die-cast trim. Luminaire will accommodate (1) hex louver and (1) collar accessory, no accessory holder required.



Translucent Decorative Collar

NIO-AS14(color) 5/8" length  
NIO-AS19(color) 3/4" length  
NIO-AS26(color) 1" length  
**Color:**  
AM (amber), BLU (blue), FR (frosted), R (red)

Translucent collars color the aperture with the specified color while producing white general light. Collars are available in different lengths. Use to add interest, create a theme, match a theme or define a space.



Opaque Collar Snoot

NIO-AS14(color) 5/8" length  
NIO-AS19(color) 3/4" length  
NIO-AS26(color) 1" length  
**Color:**  
BLK (black), MPW (matte powder white), WH (white)

Opaque snoot greatly reduces aperture brightness while preserving light output. (Note: Black snoot will reduce light)



Hex Cell Louver

NIO-HC Black  
Hex cell louver subtly reduces aperture brightness by reducing light output by about 20%.

PHOTOMETRICS

4" Pearl LED Round Adjustable Pinhole Retrofit

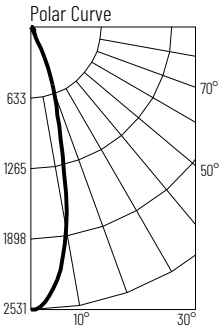
Type

Project

Catalog No.

Notes

**Test Information**  
Test Number: NTR1545  
Part Number: NPR-4RPHA30XWW  
Beam Spread: 27° Spot  
Lumens: 747lm  
Wattage: 11.65W  
Efficacy: 64pw  
CCT / CRI: 3000K / 90 CRI  
Spacing Criteria (0°-180): 0.46  
Spacing Criteria (90°-270): 0.46

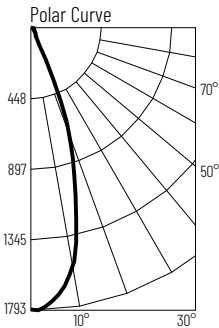


Illuminance at a Distance		
Distance from Luminaire	FC at Nadir	Beam Diameter
4'	158fc	1'-11"
6'	70.2fc	2'-11"
8'	39.5fc	3'-10"
10'	25.3fc	4'-10"
12'	17.6fc	5'-10"

Zonal Lumen Summary		
Zone	Lumens	% Luminaire
0-30	616	82.5
0-40	652	87.3
0-60	703	94.1
0-90	744	99.7
90-180	2	0.3
0-180	747	100

Candela Table	
Vertical Angles	Candela
0	2528
5	2335
15	1031
25	213
35	56
45	35

**Test Information**  
Test Number: NTR1546  
Part Number: NPR-4RPHA30XWW  
Beam Spread: 35° Narrow Flood  
Lumens: 730lm  
Wattage: 11.69W  
Efficacy: 62pw  
CCT / CRI: 3000K / 90 CRI  
Spacing Criteria (0°-180): 0.58  
Spacing Criteria (90°-270): 0.58

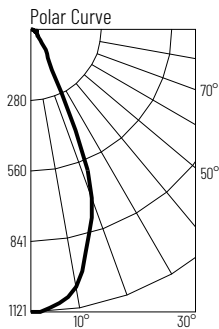


Illuminance at a Distance		
Distance from Luminaire	FC at Nadir	Beam Diameter
4'	112fc	2'-7"
6'	49.6fc	3'-10"
8'	27.9fc	5'-1"
10'	17.9fc	6'-5"
12'	12.4fc	7'-8"

Zonal Lumen Summary		
Zone	Lumens	% Luminaire
0-30	598	81.9
0-40	630	86.2
0-60	685	93.8
0-90	728	99.7
90-180	2	0.3
0-180	730	100

Candela Table	
Vertical Angles	Candela
0	1787
5	1715
15	1098
25	259
35	54
45	35

**Test Information**  
Test Number: NTR1547  
Part Number: NPR-4RPHA30XWW  
Beam Spread: 45° Flood  
Lumens: 690lm  
Wattage: 11.65W  
Efficacy: 59pw  
CCT / CRI: 3000K / 90 CRI  
Spacing Criteria (0°-180): 0.76  
Spacing Criteria (90°-270): 0.76



Illuminance at a Distance		
Distance from Luminaire	FC at Nadir	Beam Diameter
4'	70.1fc	3'-4"
6'	31.1fc	5'
8'	17.5fc	6'-7"
10'	11.2fc	8'-4"
12'	7.8fc	9'-11"

Zonal Lumen Summary		
Zone	Lumens	% Luminaire
0-30	516	74.8
0-40	582	84.3
0-60	640	92.8
0-90	688	99.7
90-180	2	0.3
0-180	690	100

Candela Table	
Vertical Angles	Candela
0	1121
5	1097
15	874
25	357
35	103
45	39

**Lumen Output Multipliers**  
Color Temperature: 2700K (0.97), 3000K (1.00), 3500K (1.05), 4000K (1.09)