

# NIO-4RTLA

4" Iolite Round Trimless Adjustable with 10° Optic

Source: 12W  
850lm

## PRODUCT DESCRIPTION

4" Trimless Iolite adjustable downlights have no exposed trim flange and do not extend beyond the ceiling plane. Iolite Trimless requires a Trimless Mud Ring and New Construction housing. Regressed cone reflector optimizes visual cut-off and adjust up to 35°.

## FEATURES

- Trimless knife edge appearance
- Delivering up to 8163 center beam candlepower (CBCP)
- 2700K, 3000K, 3500K, 4000K @ 90+ CRI
- 10° TIR optic delivers luminous intensity of higher lumen downlights
- 35° adjustability
- 5-Year limited warranty

## SPECIFICATION

**Construction:** Trims are constructed of heat dissipating, die-cast aluminum. The aluminum die-cast LED heat sink is threaded to fit the trim and transfer heat.

**Mounting:** Luminaire includes stainless steel friction clips to mount securely to trimless mud ring. Mud ring is required per trimless downlight.

## OPTIC

Each luminaire includes 10° TIR optic (Note: cannot be changed in the field)  
Luminaire is also available with field changeable optics, [Click Here](#) for more information.

## ELECTRICAL

**Lumens / Wattage:** 850lm / 12W  
**Color Temperature:** 2700K, 3000K, 3500K, 4000K  
**Color Rendering Index:** 90+ CRI  
**Operating Temperature:** Specified by housing  
**Lifetime:** 50,000 hours @ L70  
**Dimming:** Specified by housing

## COMPATIBLE HOUSINGS

Luminaires are compatible with respective Iolite housings manufactured by Nora Lighting.

CATALOG NO.	DESCRIPTION
<a href="#">NHIOICD-48LE4</a>	ICAT New Construction, 120-277V; Triac / ELV / 0-10V
<a href="#">NHIOICD-48LUPEQ</a>	ICAT New Construction, 120/277V; Lutron EcoSystem
<a href="#">NHIOICDCP-48LE4</a>	Chicago Plenum, 120-277V; Triac / ELV / 0-10V
<a href="#">NHIOICDCP-48LUPEQ</a>	Chicago Plenum, 120/277V; Lutron EcoSystem

**Accessories:** Luminaire will accommodate (1) hex louver and (1) translucent deco collar or opaque snoot, no accessory holder is required, see page 2. A trimless mud ring is required per trimless ([NIO-TLMR-4RA](#)).

## LABELS AND LISTINGS

- cULus Listed for Damp Locations
- ENERGY STAR certified
- [5-Year Limited Warranty](#)
- RoHS Compliant
- Certified to the high efficacy requirements of California Title 24 JA8-2019



Type

Project

Catalog No.

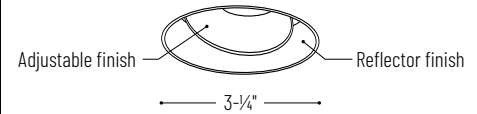
Notes

## Performance Data

Part Number	Lumens	CCT	CBCP
<b>NIO-4RTLA40QWW</b>	884lm	4000K	8163 cd

*Delivered lumens will vary depending on CCT and finish*

## PRODUCT IMAGES AND DIMENSIONS



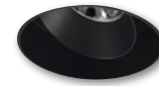
**NIO-4RTLA**  
Round Trimless Adjustable  
Adjustability: 35°



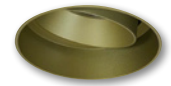
**BB**  
Black Adjustable  
Black Reflector



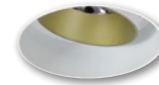
**BW**  
Black Adjustable  
White Reflector



**BZ**  
Bronze Adjustable  
Bronze Reflector



**CH**  
Champagne Haze Adjustable  
Champagne Haze Reflector



**CHMPW**  
Champagne Haze Adjustable  
Matte Powder White Reflector



**HW**  
Haze Adjustable  
White Reflector



**HZ**  
Haze Adjustable  
Haze Reflector



**HZMPW**  
Haze Adjustable  
Matte Powder White Reflector



**MPW**  
Matte Powder White Adjustable  
Matte Powder White Reflector



**WW**  
White Adjustable  
White Reflector

## 4" Iolite Round Trimless Adjustable with 10° Optic - New Construction Housing & Trimless Mud Ring Required

Type	Color Temperature	Finish
<b>NIO-4RTLA</b> = Round Trimless Adjustable	<b>270</b> = 2700K	<b>BB</b> = Black
	<b>300</b> = 3000K	<b>BW</b> = Black / White
	<b>350</b> = 3500K	<b>BZ</b> = Bronze
	<b>400</b> = 4000K	<b>CH</b> = Champagne Haze
		<b>CHMPW</b> = Champagne Haze / Matte Powder White
		<b>HW</b> = Haze / White
		<b>HZ</b> = Haze
		<b>HZMPW</b> = Haze / Matte Powder White
		<b>MPW</b> = Matte Powder White
		<b>WW</b> = White

## Compatible Housings

Housing Type

**NHIOICD-48LE4** = ICAT New Construction; Triac / ELV / 0-10V  
**NHIOICD-48LUPEQ** = ICAT New Construction; Lutron EcoSystem  
**NHIOICDCP-48LE4** = Chicago Plenum; Triac / ELV / 0-10V  
**NHIOICDCP-48LUPEQ** = Chicago Plenum; Lutron EcoSystem

## 4" Iolite Trimless Mud Ring

Description

**NIO-TLMR-4RA** = 4" Round Trimless Mud Ring

Example: **NIO-4RTLA40QWW / NIO-TLMR-4RA** = 4" Iolite Round Trimless Adjustable with 10° Optic, 4000K, White finish / Round Trimless Mud Ring

# 4" Iolite Accessories

4" Iolite Round Trimless Adjustable with 10° Optic

Type
Project
Catalog No.
Notes

## ACCESSORIES

Iolite accessories can be added at any point in the design process. Accessories easily install between LED module and die-cast trim. Luminaire will accommodate (1) hex louver and (1) collar accessory, no accessory holder required.





**Translucent Decorative Collar**

<b>NIO-AS14(color)</b>	5/8" length
<b>NIO-AS19(color)</b>	3/4" length
<b>NIO-AS26(color)</b>	1" length

**Color:**  
AM (amber), BLU (blue), FR (frosted), R (red)

Translucent collars color the aperture with the specified color while producing white general light. Collars are available in different lengths. Use to add interest, create a theme, match a theme or define a space.



**Opaque Collar Snoot**

<b>NIO-AS14(color)</b>	5/8" length
<b>NIO-AS19(color)</b>	3/4" length
<b>NIO-AS26(color)</b>	1" length

**Color:**  
BLK (black), MPW (matte powder white), WH (white)

Opaque snoot greatly reduces aperture brightness while preserving light output. (Note: Black snoot will reduce light)



**Hex Cell Louver**

**NIO-HC** Black

Hex cell louver subtly reduces aperture brightness by reducing light output by about 20%.

## TRIMLESS MUD RING

4" Iolite trimless has no exposed trim flange and the result is a minimalist knife edge appearance. A trimless mount mud ring is installed after the drywall and a professional drywall finisher floats the ceiling to blend in the mud ring.



Mud Ring

**NIO-TLMR-4RA** Round Mud Ring

Mounts trimless reflector with no exposed flange and no extension beyond ceiling plane. Mud ring attaches to drywall. **Only for use with NHIOICD-48, NHIOICDCP-48 new construction housings and NIO-4RTL.**  
Dimensions: 7-7/8" diameter 1/2" thick

## SUCTION CUP

Assist removing trimless reflector from finished ceiling after installation. For maintenance on downlight, housing and/or driver.



Suction Cup for Removal

**NIO-TLSUCTION**

# PHOTOMETRICS

## 4" Iolite Round Trimless Adjustable with 10° Optic

Type \_\_\_\_\_

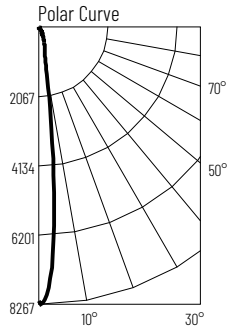
Project \_\_\_\_\_

Catalog No. \_\_\_\_\_

Notes \_\_\_\_\_

### Test Information

Test Number: NTR1899R1  
 Part Number: NIO-4RTLA40QWW  
 Beam Spread: 12° Spot  
 Lumens: 884lm  
 Wattage: 12.41W  
 Efficacy: 71lpw  
 CCT / CRI: 4000K / 90 CRI  
 Spacing Criteria (0°-180°): 0.22  
 Spacing Criteria (90°-270°): 0.22



### Illuminance at a Distance

Distance from Luminaire	FC at Nadir	Beam Diameter
6'	227fc	1'-2"
8'	128fc	1'-8"
10'	81.6fc	2'-1"
12'	56.7fc	2'-6"
14'	41.6fc	2'-11"

### Zonal Lumen Summary

Zone	Lumens	% Luminaire
0-30	700	79.2
0-40	790	89.4
0-60	870	98.4
0-90	884	100
90-180	0	0
0-180	884	100

### Candela Table

Vertical Angles	Candela
0	8163
5	5084
15	689
25	323
35	136
45	64

### Lumen Output Multipliers

Color Temperature: 2700K (0.9), 3000K (0.96), 3500K (0.96), 4000K (1.00)