

NHIOICD-415 / NHIOICD-420 / NHIOICD-425 NHIOICDCP-415 / NHIOICDCP-420 / NHIOICDCP-425

4" Iolite IC Air-Tight High Lumen New Construction Housing

Source: 20W to 28W LED
1500lm to 2500lm

Type	
Project	
Catalog No.	
Notes	

PRODUCT DESCRIPTION

New construction housing for use in insulated ceilings can be in direct contact with insulation. Air-tight construction provides energy savings by reducing the flow of air through the ceiling. Patented design allows for easy, tool-less removal of the driver.

SPECIFICATION

Housing: 0.040" Aluminum housing can be installed in 1/2" ceiling thickness, an extension collar (NIO-4EXTC2) is available for ceiling thickness up to 2".

Patented Driver Assembly: Allows driver to slide out of housing without tools from the room side. Housing includes a removable top cover for driver maintenance above the ceiling.

Air Flow Restriction: Meets requirements of Air-Tight (AT) <2CFM (cubic feet per minute) in accordance with ASTM-283 Air-Tight requirements.

Clearance: "IC" Insulated ceiling housings are direct contact rated. Not to be used in direct contact with spray foam insulation.

Bar Hangers: Two 13-3/4" to 24-1/2" adjustable bar hangers with captive nails are included on housing. Bar hanger brackets are parallel to junction box, but can be repositioned 90° perpendicular to junction box if desired. "L"-shaped bar hanger foot to align to bottom of construction joist. A T-bar notch allows for easy installation in a suspended ceiling.

Junction Box: Pre-wired 25 cubic inch 0.064" thick galvanized steel, with seven 1/2" knockouts, four Romex® pryouts, and snap on covers. All leads are #18AWG wire, the ground wire is connected to the bottom, and quick connectors are supplied on all leads. Maximum of 8 no. 12 AWG through branch circuit conductors suitable for at least 90°C permitted in junction box. Junction box is accessible from the room side through housing opening.

Emergency: Housing can be specified with connections for emergency battery installation. Requires access above ceiling. Must specify battery with remote test switch separately (NEPK-07LEDUNV). *Note: Emergency is not compatible with Chicago Plenum housings.*

ELECTRICAL

	415LE4	415LUPE0	420LE4	425LE4
Input Voltage	120/277V			
Input Power	20W	20W	24W	28W
Power Factor	≥0.90			
Dimming	Triac / ELV / 0-10V	Lutron EcoSystem	Triac / ELV / 0-10V	
Operating Temp.	40°C max.	25°C max.	30°C max.	25°C max.

COMPATIBLE TRIMS

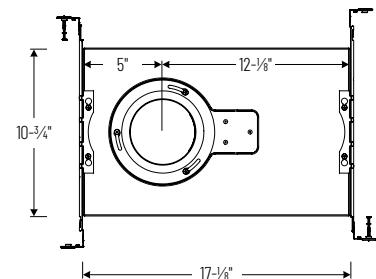
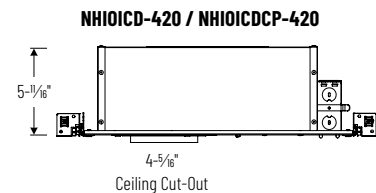
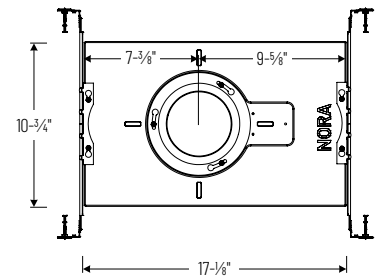
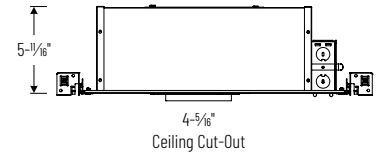
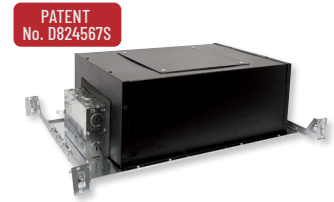
CATALOG NO.	DESCRIPTION
NIO-4RC	4" Round Adjustable Cone Regress
NIO-4SC	4" Square Adjustable Cone Regress
NIO-4RG	4" Round Adjustable Surface Gimbal
NIO-4SG	4" Square Adjustable Surface Gimbal
NIO-4RD	4" Round Adj. Deep Regress (2000lm max.)
NIO-4SD	4" Square Adj. Deep Regress (2000lm max.)
NIO-4RND	4" Round Deep Reflector
NIO-4SND	4" Square Deep Reflector
NIO-4RPH	4" Round Pinhole
NIO-4RPHA	4" Round Adjustable Pinhole
NIO-4RSL	4" Round Adjustable Slot Aperture
NIO-4RNB	4" Round Bullnose
NIO-4SNB	4" Square Bullnose
NIO-4SND	4" Square Reflector / Square Aperture
NIO-4SDSQ	4" Square Adjustable / Square Aperture (2000lm max.)
NIO-4RW	4" Round Wall Wash (2000lm max.)
NIO-4SW	4" Square Wall Wash (2000lm max.)
NIO-4RTL	4" Round Trimless Adjustable
NIO-4RTLND	4" Round Trimless Downlight
NIO-4PRTL	4" PLUS Round Trimless
NIO-4PRTLND	4" PLUS Round Trimless Downlight

LABELS AND LISTINGS

- cULus Listed for Damp Locations (Wet Locations when used with compatible trim)
- ENERGY STAR certified
- [5-Year Limited Warranty](#)
- RoHS Compliant
- FCC compliant
- Patent #D824567S
- Meets or exceeds ASTM-283 Air-Tight requirements



PRODUCT IMAGES AND DIMENSIONS



NHIOICD-415 / NHIOICDCP-415
NHIOICD-425 / NHIOICDCP-425

4" Iolite ICAT High Lumen New Construction Housing - Compatible with NIO-4 trims (except PLUS trims)

Housing Type / Lumens / Wattage	Driver / Dimming	Optional Emergency
NHIOICD-415 = IC Air-Tight, 1500lm / 20W NHIOICDCP-415 = Chicago Plenum, 1500lm / 20W	LE4 = 120/277V input; Triac / ELV / 0-10V dimming LUPE0 = 120/277V input; Lutron Hi-Lume Premier 0.1% EcoSystem with Soft-On, Fade-to-Black (consult factory)	/PEM = Pre-Wired for Remote Emergency (not compatible with NHIOICDCP)
NHIOICD-420 = IC Air-Tight, 2000lm / 24W NHIOICDCP-420 = Chicago Plenum, 2000lm / 24W NHIOICD-425 = IC Air-Tight, 2500lm / 28W NHIOICDCP-425 = Chicago Plenum, 2500lm / 28W	LE4 = 120/277V input; Triac / ELV / 0-10V dimming	/PEM = Pre-Wired for Remote Emergency (not compatible with NHIOICDCP)

Optional Accessories

Description
NEPK-07LEDUNV = Remote Emergency Battery w/Test Switch
NIO-4EXTC2 = Ceiling Extension Collar up to 2"

Example: NHIOICD-420LE4 = 4" Iolite ICAT High Lumen New Construction Housing, 2000lm / 24W, 120-277V input; Triac / ELV / 0-10V dimming