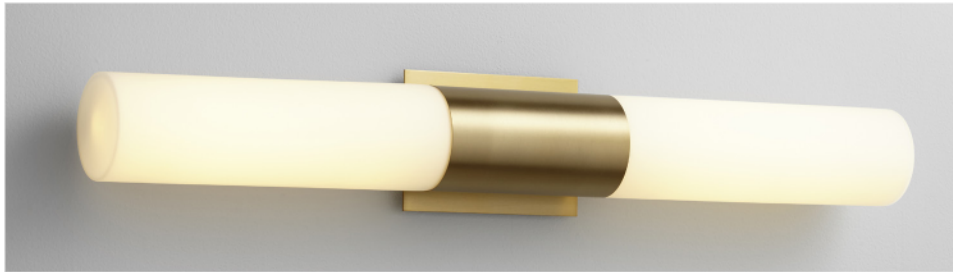


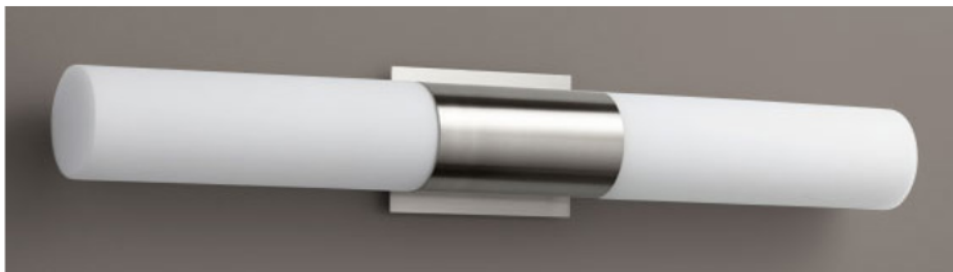
MAGNUM Vanity
3-588-xxx

oxygen

FIXTURE TYPE _____ LOCATION _____
PROJECT _____ DATE _____



-40 Aged Brass



-24 Satin Nickel

Diffusers:



-1 White Opal Glass



- Matte White Acrylic

| | |
|-----------------------------|--|
| LIGHT SOURCE | 2 x 12.1W LED, 3000K, CRI 90 |
| LUMINAIRE POWER | 28.7W at 120V |
| RATED LIFE | 60000 hr RL |
| OPTIONAL COLOR TEMPERATURES | 2700K, 3500K, 4000K |
| LUMEN OUTPUT | Delivered: (-1) Glass: 2369 lm (LM-79) Acrylic: 2256 lm (LM-79) |
| INPUT VOLTAGE | 120V to 277V AC, 50/60Hz |
| DRIVER OUTPUT | 700mA, 29.4W max power |
| DIMMING | TRIAC and ELV dimming at 120V AC; 0-10V dimming, 100% to 1% current output |
| CONSTRUCTION | Plated Steel and Acrylic or Glass |
| DIFFUSER/ METAL FINISHES | (-124) White Opal Glass/Satin Nickel (-140) White Opal Glass/Aged Brass (-24) Matte White Acrylic/Satin Nickel (-40) Matte White Acrylic/Aged Brass |
| MOUNTING | 2" x 3" J-Box, 4" Octagonal J-Box, 4" Square J-Box with a single device mud ring |
| STANDARDS | UL Dry/Damp listed, ADA Compliant, CEC Title 24 Compliant, Conforms to UL STD 1598, Certified CAN/CSA STD C22.2 No 250.0. |



DIMENSIONS

| | |
|-------------|----------------------------------|
| W: | 30.75" |
| H: | 4.75" |
| Ext: | 4.00" |
| M.C: | 2.38" From top of fixture |

Order example for standard fixture:

3-588-24 (x- Voltage - xxx-Sequence # - xx-Finish)

3: 120V to 277V

Order example for optional color temperatures: **3-588-2724**

27: 2700K, 35: 3500K, 40: 4000K

