

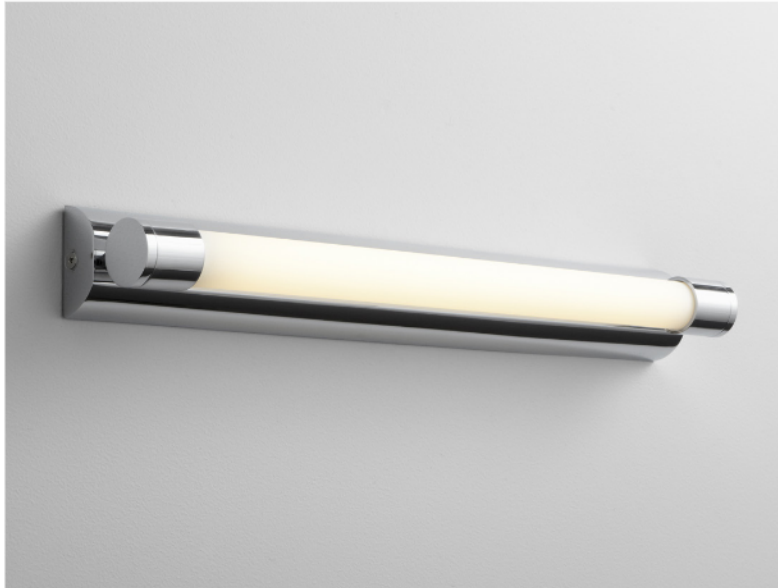
# SKYLINE Vanity

120v / 277v: **2-5131-xx**

# oxygen

FIXTURE TYPE \_\_\_\_\_ LOCATION \_\_\_\_\_

PROJECT \_\_\_\_\_ DATE \_\_\_\_\_



-14 Polished Chrome



-24 Satin Nickel

**LIGHT SOURCE** 1 x 14W Florescent, T5 Linear florescent (mini bi-pin)  
(Lamp not included)

**RATED LIFE** See lamp manufacturer specification

**LUMEN OUTPUT** Initial: 1840 lm

**INPUT VOLTAGE** 120V - 277V

**BALLAST** Electronic, HPF, Programmed start, Universal voltage.  
(120-277V)

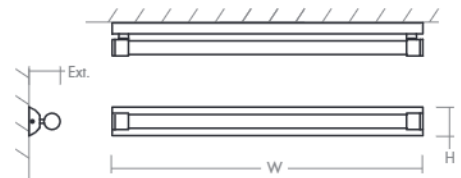
**CONSTRUCTION** Plated Steel and Acrylic

**DIFFUSER** - Matte White Acrylic

**METAL FINISH** Polished Chrome (-14), Satin Nickel (-24)

**MOUNTING** 2" x 3" J-Box

**STANDARDS** UL/Damp listed, ADA compliant, CEC Title 24 Compliant,  
Conforms to UL STD 1598, Certified CAN/CSA



## DIMENSIONS

**W:** 24.00"

**H:** 3.25"

**Ext:** 4.00"

**M.C:** 1.625" From Top of Fixture

Order Example: **3-519-14** (x- Voltage xxx- Sequence # xx- Finish)  
3: 120v, 37: 277v, 32: Universal Voltage

