



OLO always originates from a circle or a line. Using the basic elements to create the picture of a light, Designer White challenges our every imagination by series that is designed to be limitless in possibilities.

Rotatable lamp shade embedded in cutting-edge design of hollow circle with glare-free LED lighting, the CRI 90 softened light can impressively create practical as well as ambient light. With an easy one-touch-dimmer, you are one fingertip away to letting your imagination can run loose and allowing the fun to begin.

By Li, Hui Lun 李慧倫

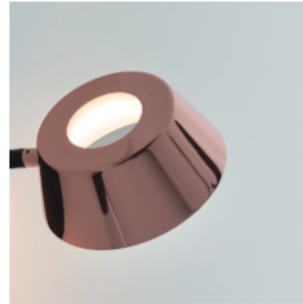




matt black



champagne gold

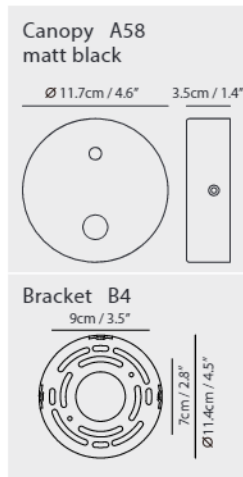
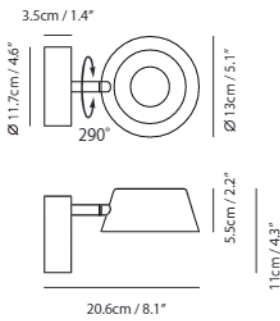


copper



oatmeal

Measurement : centimeter / inches



OLO Wall

Model
SLD-130WRTE

Material
metal, aluminum, PP

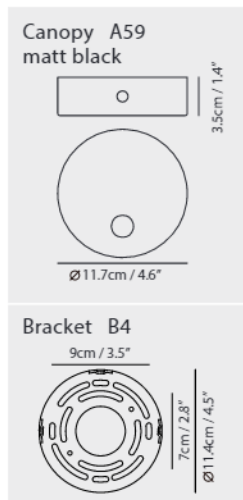
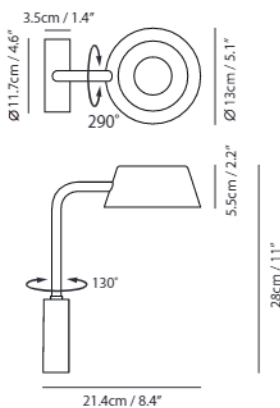
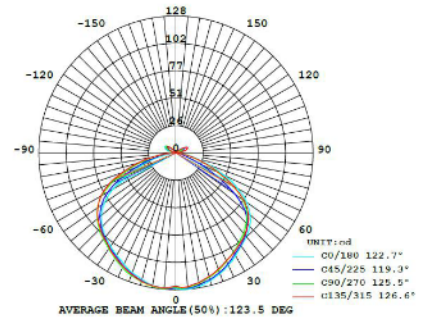
Light Source
LED 8W 3000K CRI90 415lm

Feature
Touch dimmer switch

Weight
0.6kg / 1.3lb

Color

- matt black
- matt black + champagne gold shade
- matt black + copper shade
- oatmeal



OLO Wall WU

Model
SLD-130WUTE

Material
metal, aluminum, PP

Light Source
LED 8W 3000K CRI90 415lm

Feature
Touch dimmer switch

Weight
0.8kg / 1.7lb

Color

- matt black
- matt black + champagne gold shade
- matt black + copper shade
- matt black + oatmeal shade