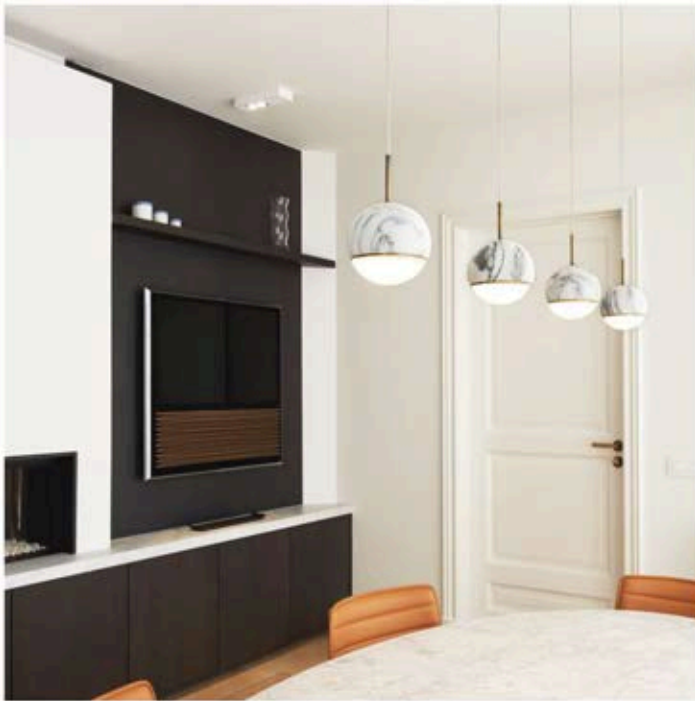


# WANDERING STAR

Designer | VISO Design Studio



Dual-tone globe with solid European marble top and cast glass lens with diffuser on the inside

Metal plated details in hairline bronze finish

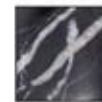
Includes silver coaxial cable

Custom clusters are available

LED



## OPTIONS



NERO MARBLE  
MARQUINA  
POLISHED **55**



CARRARA  
MARBLE WHITE  
POLISHED **50**



TRABERTINO  
BEIGE STONE  
MATTE **43**



CARRARA  
MARBLE WHITE  
MATTE **51**



INDIAN GREEN  
MARBLE  
POLISHED **56**



Model | **Wandering Star Suspension**  
 Size | 110  
 Ref. # | SM.07.351\_ \_ \_  
 Lamping | 5.5W LED  
 3000K, 440Lm  
 Triac/ELV/0-10V Dimming Available  
 Dims from 100% - 15%  
 ±



Model | **Wandering Star Suspension**  
 Size | 160  
 Ref. # | MM.07.351\_ \_ \_  
 Lamping | 12W LED  
 3000K, 960Lm  
 Triac/ELV/0-10V Dimming Available  
 Dims from 100% - 15%  
 ±

	SM	MM
Lbs	3	10
Kg	1.4	4.5

