

PALMA

Design by Antoni Arola.

Reference

3750.

Application

Wall Fixtures

Installation type

Surface mounted

Description

Vibia presents Palma designed by Antoni Arola. It includes hand blown glass spheres paired with a lacquered metal support. Sconces are available in horizontal or vertical as single, double or triple with versions available sans planter. Matte white or matte graphite lacquer finishes.

Diffuser

Blown-glass diffuser

Materials

Profile: Aluminum

Flowerpot: PMMA (thermoplastic polymer)

Ring: Aluminum

Wall plate: Steel

Finishes

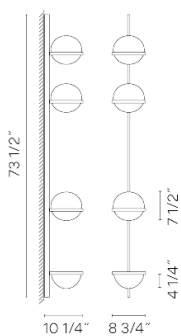


3750-18 Black (ADAPTA RF 9913 WX)



3750-93 White (RAL 9016)

Sketch



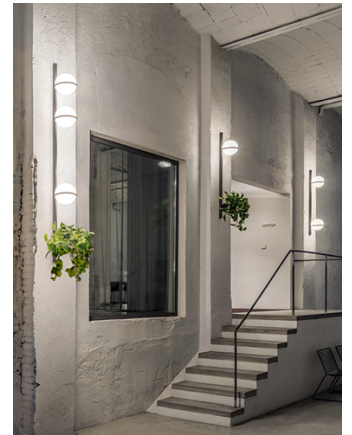
Electrical characteristics

6 x LED 4.6W 500mA

Total 27.6 W



VIBIA



Light source: 2700K CRI >90 2604 lm 94.34 lm/W

Fixture: 2056 lm 74.51 lm/W

Driver included: CC - Constant Current 500 mA 120V 50/60Hz

Electronic dimming: 1-10V

Technical characteristics

- Plants not included

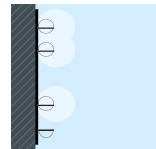
Installation and assembly

Please see the installation manual

Light distribution

General lighting

Lamp for general lighting that equally distributes the light in all directions.



Photometric data

Coordinate system : CG

Isolux : Isolux (Floor)

Maximum value : 221.08 cd/klm

Light position :

Light position : C=0.00 G=0.00

X=0.00m Y=0.00m Z=2.50m

Symmetry on the planes : Double symmetrical

Certificates

