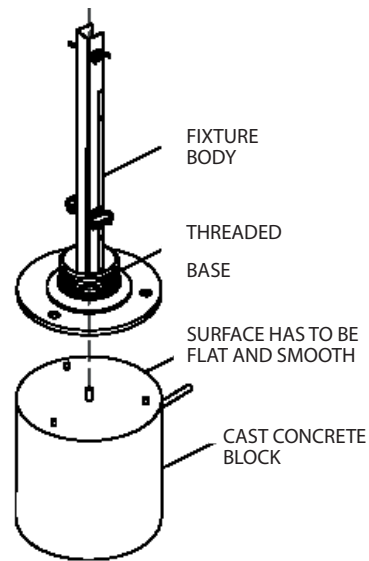
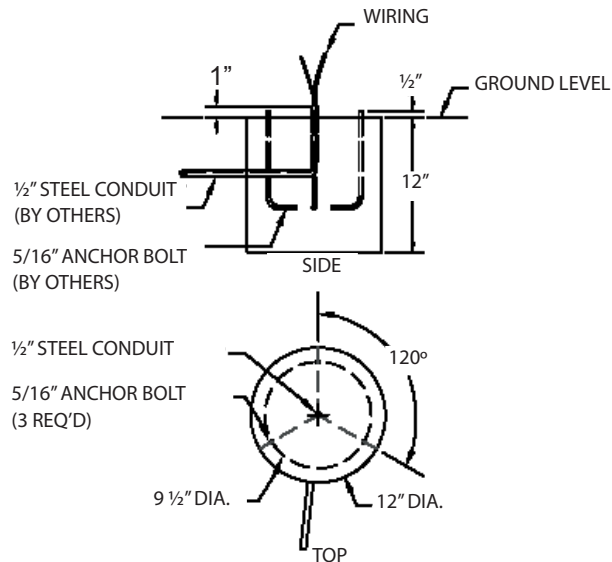


1

PRE-INSTALLATION PREPARATIONS

- CAST CONCRETE BLOCK 12" IN DIAMETER AND 12" DEEP WITH THE TOP LEVEL WITH THE GROUND.
- BLOCK SHOULD INCLUDE (3) 5/16" ANCHOR BOLTS AT LEAST 6" LONG, SET AT 120 DEGREES TO EACH OTHER AND AT A RADIUS OF 4 3/4" FOR THE CENTER OF THE BLOCK. BOLTS SHOULD BE PROJECT ABOUT 1/2" ABOVE TOP OF CONCRETE BLOCK.
- BLOCK SHOULD ALSO INCLUDE A 1/2" STEEL CONDUIT WITH AWG RATED WIRING RUNNING THROUGH IT. CONDUIT SHOULD PROJECT ABOUT 1" ABOVE TOP OF CONCRETE BLOCK.

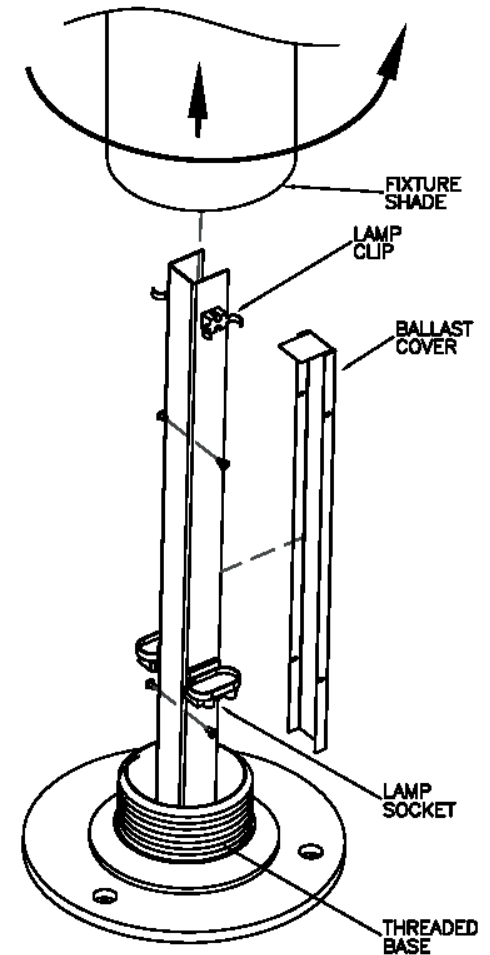
NOTE: TOP SURFACE OF CONCRETE BLOCK ON WICH FIXTURE WILL BE MOUNTED HAS TO BE LEVEL AND VERY SMOOTH IN ORDER TO MAKE A WATER-TIGHT SEAL.



2

PRE-INSTALLATION PREPARATIONS

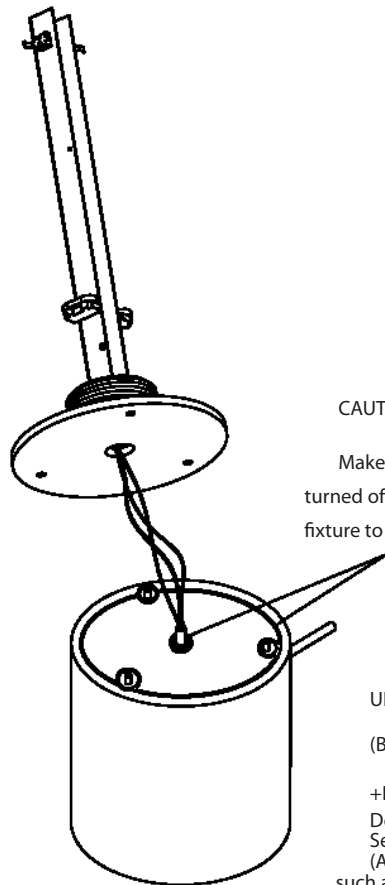
- UNSCREW PLASTIC SHADE FROM THREADED BASE, THEN CAREFULLY LIFT IT OFF THE FIXTURE BODY TO AVOID BREAKING THE SOCKETS OR CLIPS.
- LOOSEN (4) SCREWS HOLDING THE BALLAST COVER AND SLIDE COVER OFF TO EXPOSE WIRING COMPARTMENT.



3

INSTALLATION PROCEDURE (1)

- APPLY "UL" APPROVED SEALANT TO CONCRETE BASE, AROUND THE EDGE, AND ENCIRCLING THE PROTRUDING ANCHOR BOLTS.
- INSERT FEED WIRES THROUGH THE HOLE IN THE CENTER OF THE FIXTURE BASE, ENSURING THAT THERE IS ENOUGH WIRE TO CONNECT FIXTURE.
- FILL THE WIREWAY HOLE IN THE BASE OF THE FIXTURE WITH SEALANT.
- SET FIXTURE BASE FIRMLY ONTO SEALANT ON CONCRETE BLOCK.



CAUTION
Make sure electricity is turned off before connecting fixture to feed!

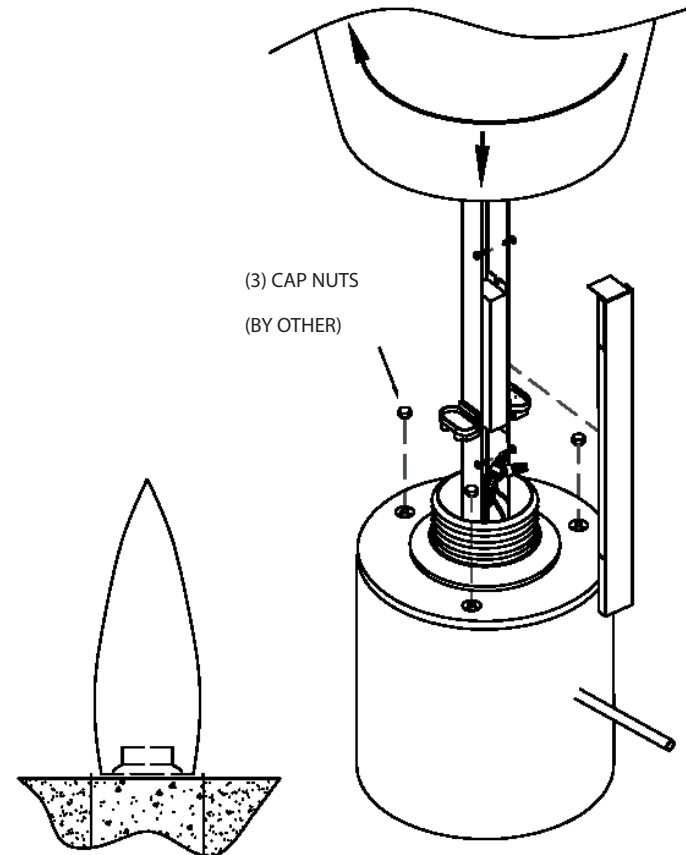
UL APPROVED "SEALANT"
(BY OTHERS)

+Recommended Sealants:
Down Corning UL Listed Sealant #733,737 or 748
(Available at large suppliers such as Mc Master-Carr)

4






INSTALLATION PROCEDURE (2)

- USE 5/16" CAP NUTS TO SECURELY FASTEN FIXTURE TO CONCRETE BLOCK.
- CONNECT BALLAST WIRES TO FEED WIRE USING WIRE NUTS.
- (ENSURE THAT FIXTURE IS GROUNDED)
- PUSH WIRE NUTS INTO BALLAST CHANNEL, THEN SCREW BALLAST COVER SHUT.
- INSERT (2) 36W LONG TWIN LAMPS INTO THE SOCKETS, THEN SNAP THE ENDS OF THE LAMPS INTO THE CLIPS.
- LOWER SHADE ONTO FIXTURE BODY, THEN TIGHTLY SCREW SHADE DOWN TO THE BASE.



(3) CAP NUTS
(BY OTHER)

Consumer information:

- Lamps without the IP mark are classed as IP20 and are designed for general interior use, except wet areas (bathrooms, etc.)
- Lamps with the IP mark are designed for exterior use and in wet areas. (E.g. IP54)
- They offer guaranteed protection to people and animals against electrical discharge:
 - Class I: through single electrical insulation and an earthing conductor once correctly connected.
 -  • Class II: through double electrical insulation.
 -  • Class III: these kinds of lamps should be connected at very low voltage levels (generally 12V); therefore there is no risk.
-  • Lamps with this symbol, or without any symbols, can be mounted directly onto normally inflammable surfaces.
-  • Lamps with this symbol cannot be mounted directly onto normally inflammable surfaces.
- The safety of this lamp is guaranteed by using a maximum wattage bulb that does not exceed the figure displayed visibly on the lamp.
-  • The product cannot be treated like conventional domestic waste; it must be taken to the corresponding recycling point for electrical and electronic equipment.

Assembly instructions

B.lux

B.LUX S.A.
Pol. Ind. Okamika, pab. 1
48289 Gizaburuaga (Bizkaia) Spain
T.(+34) 94 682 72 72
F. (+34) 94 682 49 02
info@grupoblux.com
www.grupoblux.com