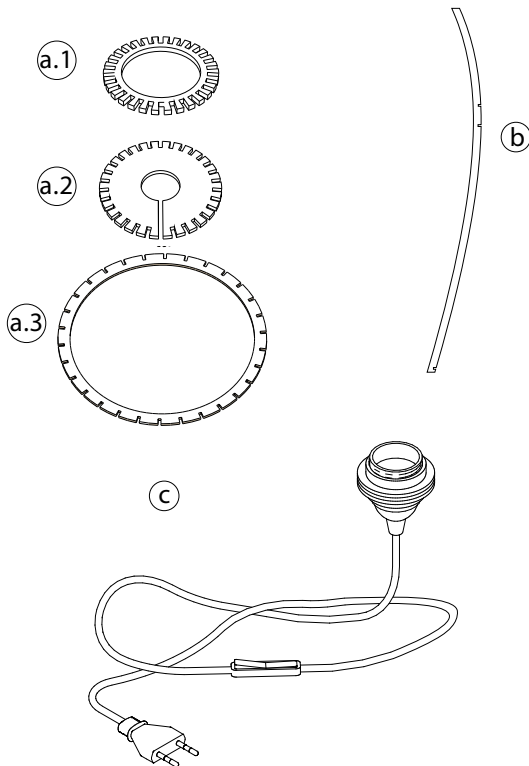


# Components

- 1 X Gearwheel (a.1)
- 1 X Gearwheel (a.2)
- 1 X Gearwheel (a.3)
- 26 X Slats (b)
- 1 X Electrical assembly (c)
- 1 X LED bulb E26 Warm light recommended (up to 20W)



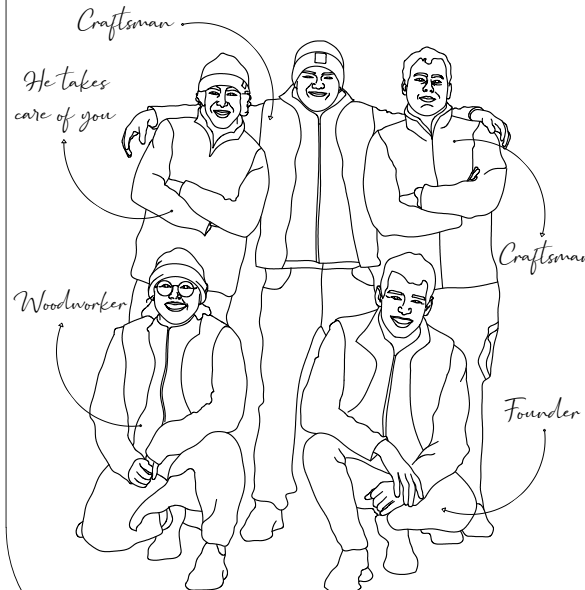
## A big thank you !

We are happy to have you on board with Atelier Loupiote and thank you for helping to grow this project that means so much to us.

### Something radiant awaits you!

Conceived in our minds and crafted by our hands, all our luminaires are brilliantly made in our workshop in Lyon to ensure **100% local production.**

And to stay tuned, you can follow us on Facebook and Instagram! (content in french only) [Atelier-loupiote.fr](http://Atelier-loupiote.fr)

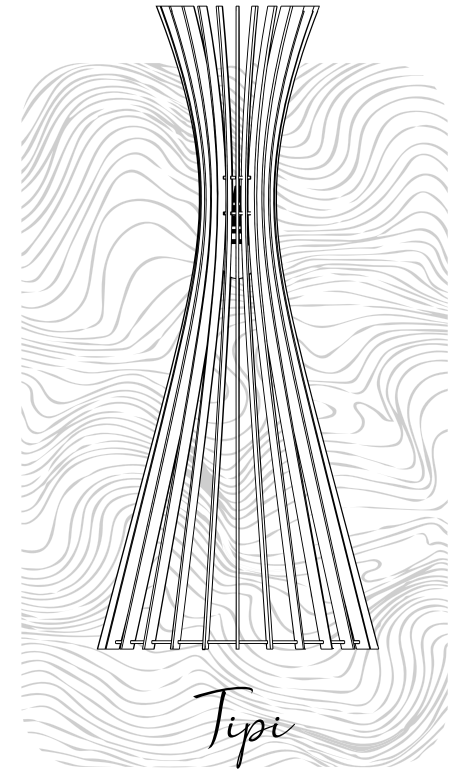


Our Loupiote team

# ATELIER Loupiote

X

# KIPLI



## Our manual

### CAUTION !

Please make sure to cut off the electricity and seek assistance from a professional for the connection. Only turn on the electrical equipment once the assembly is complete and the bulb is screwed in place.

### PRELIMINARY INFORMATION :

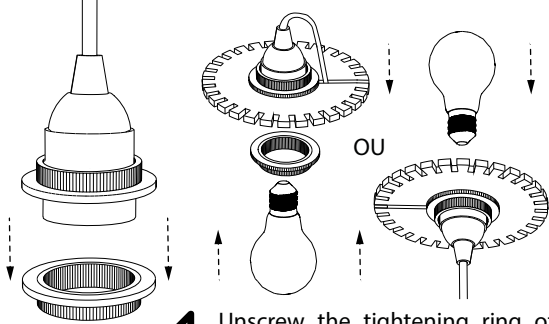
Some parts are fragile, handle them with care. We recommend setting up on a flat and stable surface to reduce the risk of breakage.

### ARE YOU READY ?

Don't panic, we'll explain everything. Say goodbye to glue and tools; you only need your two hands for assembly. Pinky promise, it's a breeze. The parts are designed to fit together effortlessly. Just go with the flow!

### NEED HELP ?

If you encounter any issues and require technical support, please contact our workshop directly via email at the following address: [hello@atelier-loupiote.fr](mailto:hello@atelier-loupiote.fr). We'll be happy to assist you.



- 1 Unscrew the tightening ring of the socket. Insert the socket into the gearwheel (a.2) and secure it by screwing the ring back in place. Plug a LED bulb E26 into the socket.

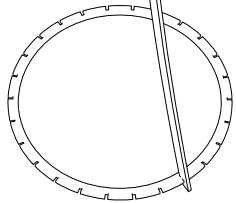
Insert the gearwheel (a.2) into the middle notch of a slat (b), with the LED bulb facing down.

2

The middle notch

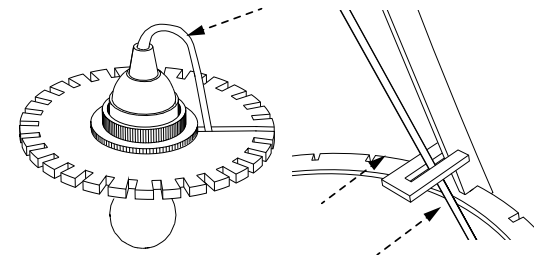
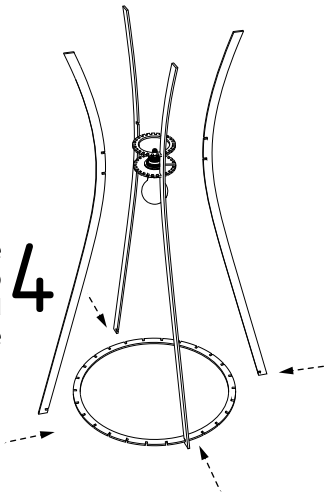


- 3 Insert the gearwheel (a.1) into the top notch, then the large gearwheel (a.3) into the remaining notch at the bottom end of the slat (b).



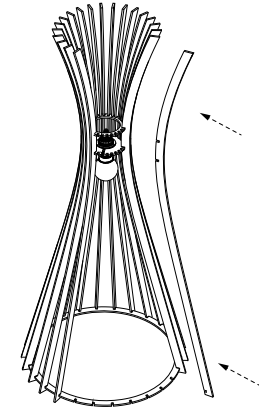
Insert a slat (b) on the three opposite sides in order to stabilize the model and facilitate the remainder of the assembly.

4



Thread the cable through the slot in the gearwheel (a.1), and run it along a slat (b) to the base of the model. Secure the cable using the provided U-shaped fasteners.

5



- 6 Insert the remaining slats (b) to complete the assembly. You can now plug the power cable for the lamp to light up.

*And you're done !*

